



With its richly embroidered bodice and tulle, this gorgeous gown is a perfect balance of feminine elegance.

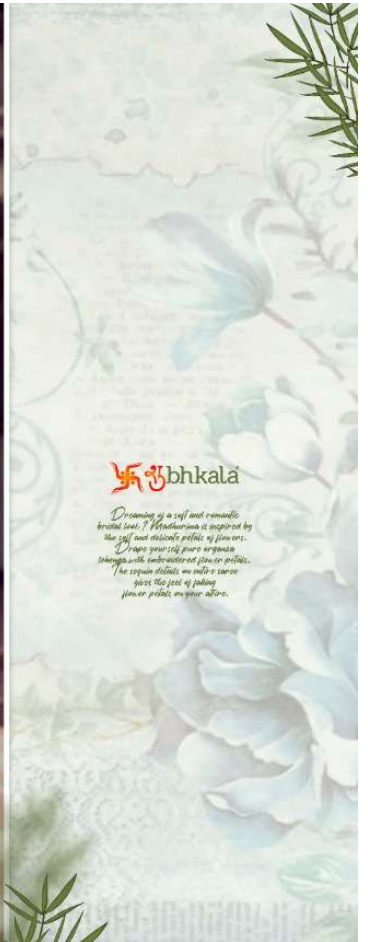
4811

FLORY

VOL-26

bhkala





Ubhkala

*Dreaming of a soft and romantic
brutal love? Meditation is inspired by
the soft and delicate petals of flowers.
Drape your big pure aroma
strength with tenderness of flower petals.
The square details, we into a caron
give the feet of picking
flower prints on your skin.*



शुभकला

With its richly embroidered border and tassels, this gorgeous gown truly perfectly enhances the feminine silhouette.

4811



With its richly embroidered bodice and tulle, this gorgeous gown is a perfect balance of feminine elegance.

4811

Shikha

We have embraced the colours of nature in our
latest this spring. Of gentle aqua, serene in a "mint" like eye and a perfect
drapes for the summer weddings.

4817



 bhkala

Embrace the 'less is more' philosophy and fall in love with this lighter - than - air casual dress from the collection Effortless.



4813





शुभकला

*When you wish to see an altar,
that is momentally get dressy,
nothing comes
close to a real as perfect shade.*

4814



श्रीbhkala



*An eye has an eye, all are watching
Lips are silent, and smiling by a dark or blue flower is a new fire hand flower.*

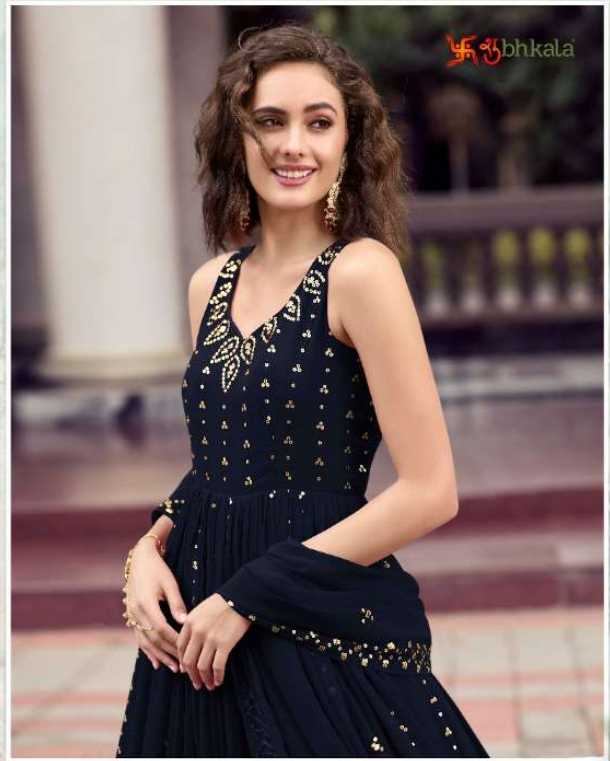
4814



With its richly embroidered bodice and tulle, this gorgeous gown is a perfect balance of feminine and classic.

4815





With its richly embroidered bodice and tulle, this gorgeous gown is a perfect balance of the feminine silhouette.

4817



4811



4812



4815



4816



4813



4814



4817



 bhkala
FLORY
VOL. 26

FLORY

VOL-26

Design NO. (SKU)	Gown & Inner Color	Dupatta Color	Gown Fabric	Dupatta Fabric	Inner Fabric	Gown & Dupatta Work	SIZE (SEMI - STITCHED)	Top Length INCH	Inner Length MTR	Dupatta Length
4811	Green	Green	Georgette	Georgette	Silk Crepe	Thread And Sequince Embroidered Work	Semi Stitched (Customized from 34 to 46)	58	3	2.30 MTR
4812	Rama	Rama	Georgette	Georgette	Silk Crepe	Thread And Sequince Embroidered Work	Semi Stitched (Customized from 34 to 46)	58	3	2.30 MTR
4813	Black	Black	Georgette	Georgette	Silk Crepe	Thread And Sequince Embroidered Work	Semi Stitched (Customized from 34 to 46)	58	3	2.30 MTR
4814	Rani	Rani	Georgette	Georgette	Silk Crepe	Thread And Sequince Embroidered Work	Semi Stitched (Customized from 34 to 46)	58	3	2.30 MTR
4815	Purple	Purple	Georgette	Georgette	Silk Crepe	Thread And Sequince Embroidered Work	Semi Stitched (Customized from 34 to 46)	58	3	2.30 MTR
4816	Maroon	Maroon	Georgette	Georgette	Silk Crepe	Thread And Sequince Embroidered Work	Semi Stitched (Customized from 34 to 46)	58	3	2.30 MTR
4817	Dark Blue	Dark Blue	Georgette	Georgette	Silk Crepe	Thread And Sequince Embroidered Work	Semi Stitched (Customized from 34 to 46)	58	3	2.30 MTR

CAN-CAN NOT AVAILABLE. • FULL STITCHING AVAILABLE.

GOWN WEIGHT: 1 KG

THIS BOOK / CATALOGUE / LOGO / ARE PROTECTED UNDER COPYRIGHT ACT.

AN ILLEGAL/UNAUTHORIZED REPRINT, PUBLISHING, REPRODUCTION, DISTRIBUTION AND MODIFICATION OF ANY IMAGES, PHOTOGRAPHS AND PRODUCTCS, TOTALLY OR IN PART, FOR ANY PURPOSE, REASON OR CAUSE IS STRICTLY PROHIBITED AND PUNISHABLE UNDER LAW.



