



ALINA

4745



Adaa





5081
MODERN LUXURIOUS

 **VIPUL**
— All Season Wear —
Adaa





5083



Adaa



File downloaded
(118.83 KB) [Open](#)
www.asliwholesale.com




SKU	AW-8481
Catalog	RUBY VOL-2 BY VIPUL - 25
Pcs	6
MOQ	1 SET
Size	Semi Stitched
Top Fabric	CHINON EMBROIDERY WORK WITH SWAROVSKI
Bottom Fabric	DULL SANTOON
Dupatta Fabric	PURE CHINON DIGITAL PRINT WITH SEQUIN WORK
Inner Fabric	DULL SANTOON

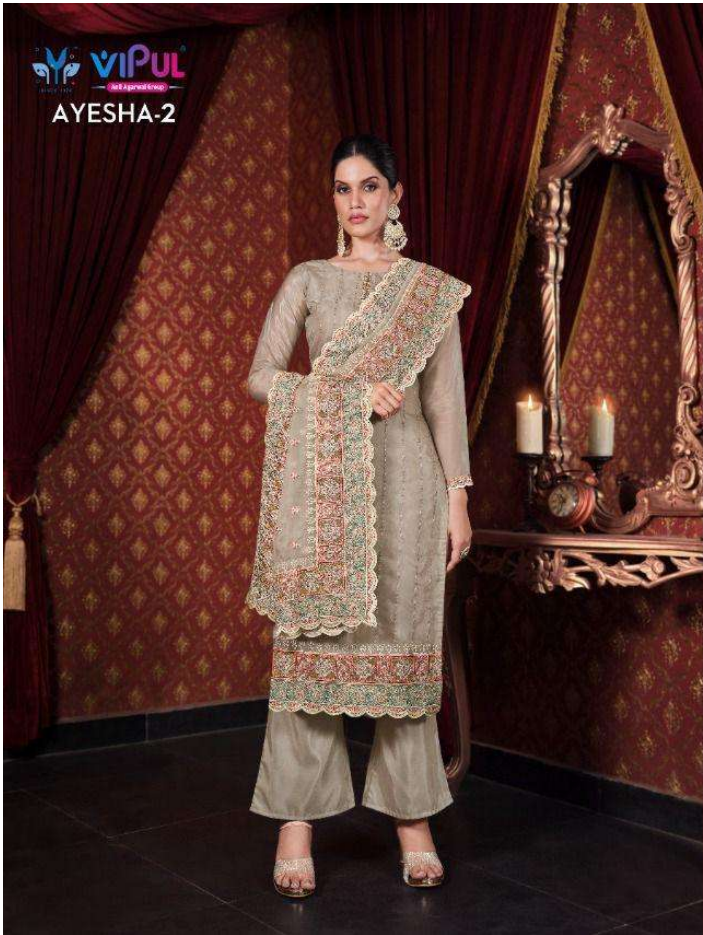


Fabric

Top And Dupatta - Two Tone Georgette , Bottor
And Inner - Dull Santoon



VIPUL
AYESHA-2



// 5004 //

 **VIPUL**
Anil Agarwal Group

AYESHA-2



5004

TYPE:


Salwar Kameez, Straight Suits

Other Detail

- FABRIC: TOP: Net , BOTTOM : Satin Net , DUPATTA : Net
- WORK: Thread embroidery
- LENGTH: TOP: As Shown in The Picture

Glitz-3



Catalog	ALINA VOL-2 BY VIPUL FASHION - 28
Pcs	6
MOQ	1 PIECE (Single Available At 
Size	Semi Stitched
Top Fabric	2 Tone Catonic Georgette With Heavy Work
Bottom Fabric	2 Tone Catonic Georgette With Heavy Work
Dupatta Fabric	2 Tone Catonic Georgette With Heavy



D.No.5041





4895

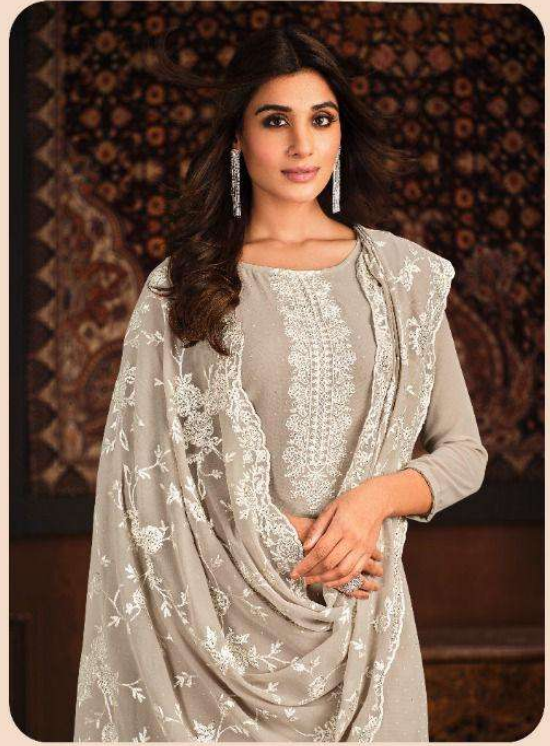
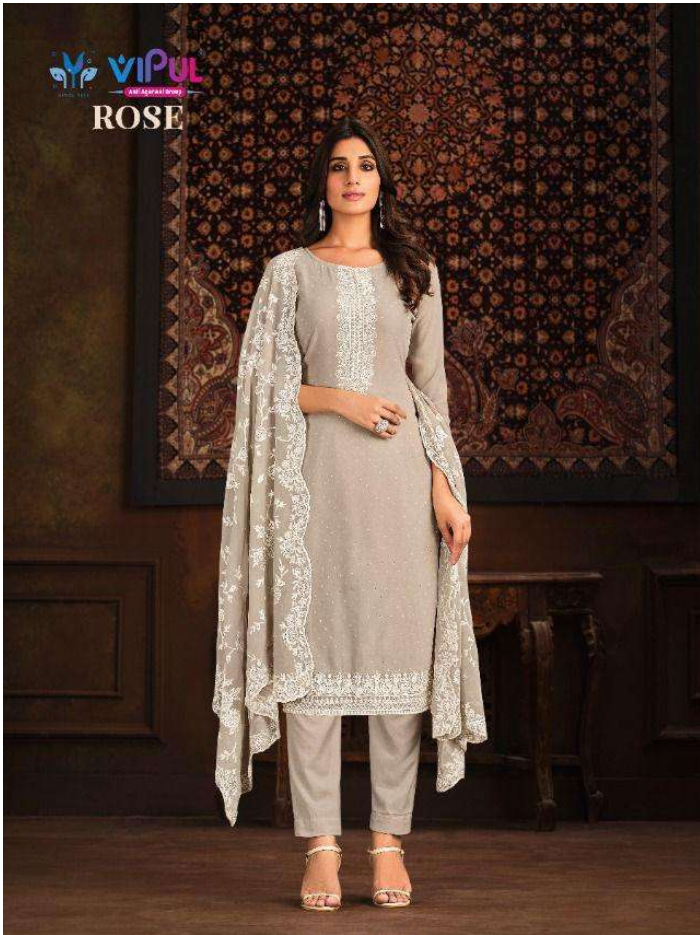
VIPUL
ambert
ambert



D.No. 5043




VIPUL
ROSE



THE INCREDIBLE

There's no way you won't slay this festive season adorned in this layered beauty.

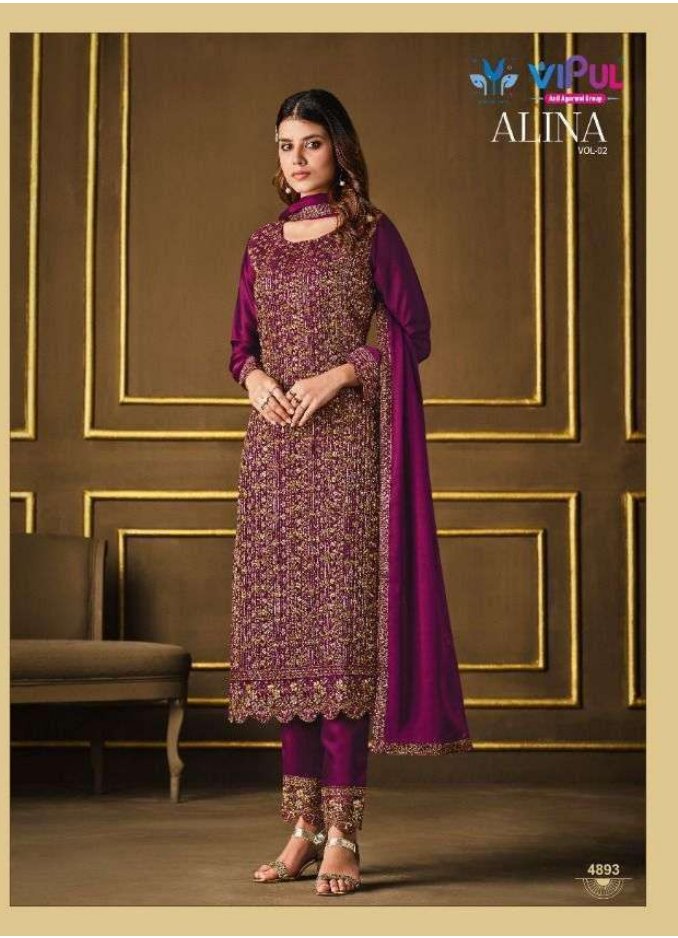
D.NO.5093

Catalog	AMBER BY VIPUL - 28
Pcs	6
MOQ	1 PIECE (Single Available At 
Size	Semi Stitched
Top Fabric	Chinon Embroidery
Bottom Fabric	Dull Santoon
Dupatta Fabric	Soft Organza Embroidery



4892







ALINA

4745

